

UNIVERSITY



LANGUAGE UK





# IELTS™



Accredited by the  
**BRITISH COUNCIL**  
for the teaching  
of English in the UK



+44122745556

+447391830101 info@languageuk.com

9 St Georges Place Canterbury, Kent CT1 1UT United Kingdom

languageuk.co.uk languageukcanterbury

languageuk languageukcanterbury languageuk



## SCHOOL PROFILE

LanguageUK was established in **2007** as an independent English language school located in **Canterbury**, Kent, which specialises in English language courses for adults, young learners and professionals. The British Council accredit us as well as the British Accreditation Council and we are a member of English UK.

At LanguageUK, we value a positive and personalised learning environment, where the teachers will get to know you and all the other students, paying close attention to your needs and requirements.

We are a small school, which means that all of the staff have daily interaction with our students. Outside the classroom, during the breaks, we have small social gatherings, usually with tea, coffee and biscuits. These daily social meetings that bring the staff and the students together are very special and important to us all. At LanguageUK, you will be made to feel very welcome from the first day onward.

We are very pleased and indeed proud to have secured a residential space at Chaucer College set in the grounds of the University of Kent campus. This course will be undertaken at the residence with full details, photographs and lists of amenities available to be sent upon request.

Canterbury is home to not one but three universities and is just **50 minutes** from **London**, where there are more than 40 universities including, 8 in the global top 100 list.

This is why at LanguageUK, we strongly believe that success in English Language Teaching:

- Lies in accelerating the learner's motivation
- Developing their language acquisition skills by enriching their productivity in an interactive and participative way
- Changing young students' desires to study either in the UK or on courses within their own countries delivered in English

# LOCATION



Only 20 minutes to the East Kent beaches



Just 50 minutes from London



Close to the Dover ferry port



There is nowhere quite like Canterbury. Our medieval walled city has been hosting visitors for over 1,000 years, so a warm welcome for any 'pilgrim' is guaranteed.

In the summer, embrace the floral displays and warm weather as you wind your way through our cobbled streets. Drink in the historic sights and shop at a huge mix of independent and high-street shops and cosy cafes.

And in the winter, the same, just different flowers.

## What can we offer you?

- 1. Ancient Architecture:** Canterbury boasts historical buildings that date back centuries. Notably, the Westgate Towers, England's largest medieval gateway, which stands as a testament to its rich past. The Eastbridge Hospital, with remarkable architecture from 1190 and the partially preserved St Augustine's Abbey (dating back to 613 AD) offer glimpses into the city's history.
- 2. Stunning Cathedral:** Canterbury Cathedral is must-see. With parts dating from the 11th century, it's an awe-inspiring structure with Norman, Romanesque and Gothic architecture. As the city's top visitor attraction, it's well worth exploring.
- 3. Shopping Experience:** While Canterbury exudes historical charm, it also offers modern shopping. Whitefriars, an open-air shopping centre, features popular brands, while the King's Mile area hosts numerous independent businesses, including jewellers, cafes and artisan shops.
- 4. Arts and Culture:** The city celebrates the arts. The Marlowe Theatre, named after playwright Christopher Marlowe, hosts exciting shows, plays, and concerts.
- 5. Easy Access:** 1. Less than an hour from London by high-speed rail, Canterbury is an ideal year-round destination. Explore cobbled streets, historic buildings, award-winning vineyards and ancient woodland as part of our special learning experience.

Canterbury  
KENT, ENGLAND



## WHY STUDY WITH US?

- Independent school, more personal care
- Smaller town, safer than big cities
- Everything is in walking distance or much less public transport is needed
- Good shopping area 5 mins away
- London is 50 minutes away
- Kent beaches are 20 minutes away
- Own garden and BBQ area
- Multi-faith prayer room
- Own shisha restaurant serving halal food, giving 20% discount for our students
- The South East of England has the best weather in the UK



# IELTS PREPARATION



# IELTS PREPARATION COURSES



Our IELTS Preparation courses are designed to get you the IELTS level you need, by the date that you need it. IELTS preparation at **LanguageUK** is ideal for students who require a specific **IELTS level for university** entrance whether in the UK or their own country.

**THE LANGUAGEUK IELTS Preparation course** is for students who want to take the **IELTS Academic Exam**. These courses are designed for students at intermediate plus level and above and aim to *develop your English skills and improve your exam technique* in preparation for the IELTS Exam.

You will follow an objective based course structure where your teacher will work with you to determine what IELTS level you need to achieve and identify which skills, techniques and exam areas you need to develop to reach your goal.

Every week, as part of your classes, you will study IELTS past papers, focussing on areas of the exam that you need to improve. Throughout your study at LanguageUK your teacher will monitor your progress and offer you feedback, advice and structured helpful support.

Once a month you will get a report and a one-to-one session with an academic manager to discuss your skills, progression and exam readiness to ensure you are on track.



# IELTS PREPARATION COURSE FACTS

**START DATE**

To be arranged

**AGE**

16+

**MAX CLASS SIZE**

10

**MINIMUM LEVEL**

Intermediate (+)

**EXAM FEE**

£170 - £195

## IELTS PREPARATION COURSE OBJECTIVES

- Determine and achieve your desired IELTS level
- Goal-oriented and highly focussed preparation programme
- Develop the skills needed to succeed in the exam
- Develop strategies to maximise your score in the exam

## WHY STUDY IELTS PREPARATION?

The IELTS exam (International English Language Testing System) gives you an English Level that is recognised by over 10,000 education and training providers worldwide. Achieving an IELTS level shows your level of English language proficiency and helps you access education or professional opportunities in English speaking countries.

LanguageUK IELTS preparation course is a great choice for any student who is serious about attending university in an English-speaking country, or for anyone wanting to work using the English language. An IELTS level is a great addition to your CV and unlocks a huge amount of educational and professional opportunities.



# HOW YOU WILL PROGRESS



We understand that all students progress at their own pace and we will work with you to help you prepare for your IELTS exam at your own speed.

Moving up an IELTS level takes approximately 12 weeks, but every student is different, and how quickly you progress depends on many factors.

A beginner will often make much faster progress than an advanced student, and of course, motivation, commitment to self-study and the use of English outside the classroom all have an impact.

## What you will get:

- Learn different exam techniques through a range of activities.
- Learn English with dynamic lessons to keep you motivated and encourage maximum progress.
- All course books and materials that you need, as these are included in the fees (exam fees not included.)
- Regular practice exams measure your progress and identify areas for improvement.
- Complete daily homework to consolidate the lesson.
- Detailed feedback on your written work.
- Access to a wide range of materials in our Study Centre to help you progress quickly.
- Once a month you will get a report and a one-to-one session with an academic manager to discuss your skills, progression and exam readiness to ensure you are on track.



**ACTION!**

## WHAT DOES THE EXAM CONSIST OF?

### SPEAKING

It lasts 11-14 minutes and it includes an individual interview with the IELTS examiner, *divided into 3 parts:*



**Part one:** You'll have to talk about yourself and your life in general. For example: Where are you from? Do you do any sport?

**Part two:** You'll have some time to prepare (about a minute) to talk about a specific topic the examiner will give you. You'll need to talk for about 2 minutes on this topic. Example topic: Talk about a place of natural beauty in your country

**Part three:** Finally, you will have to answer questions related to the previous topic. Example question: What problems can tourism create?



## LISTENING

It lasts approximately 40 minutes and it includes 40 questions which can be multiple choice, matching, note completion, etc. Most candidates will tell you that the difficulty of the listening test increases from start to end. This is probably because of the four parts it is separated into:

**Part one:** Typically, you'll listen to a conversation about a typically 'everyday English topic'.

For example: A customer booking a hotel.

**Part two:** Typically, you'll listen to a monologue about a general English topic. Example topic: A tour of a campsite.

**Part three:** This is when the listening becomes more academic. Usually, part three is a conversation on an academic topic which usually means that you'll listen to students or students and a teacher discussing an academic issue.

For example: Which modules a student wants to study next year at university.

**Part four:** Finally, there is a monologue on an academic topic. Probably given by a lecturer or someone similar. For example: A brief history of cave art.

The real challenge of this section of the test lies in the fact that you'll have to listen for specific details and the recording will be played only once.



## WRITING

The IELTS writing section takes 60 minutes and has 2 parts. For the first part, you'll have to write at least 150 words. For the second part, you'll be asked to write at least 250 words.

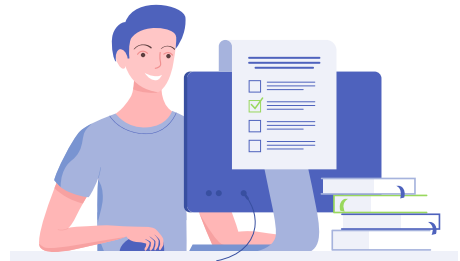
**Academic Part 1** You'll have to write 150 words in approximately 20 minutes describing some data. For example: Two pie charts comparing data.

**Academic Part 2** This is a 250-word essay which needs to be written in approximately 40 minutes answering an essay question. For example: What are the advantages and disadvantages of shopping online?

The Academic paper includes topics that you might find in university studies. This is the paper you need to take for university admission. In the IELTS Reading Comprehension test, you'll have to answer 40 questions in 60 minutes. They can be in the form of multiple choice, matching parts of sentences or completing notes.

## READING

**Academic English reading** Is made up of 3 reading texts. However, all 3 are detailed, academic type text.





We will provide you with an Intensive **plus IELTS course combining IELTS** with **a more fun-based curriculum** with British and American culture and general English material commensurate with IELTS. The exam is difficult and intense so we find that more light-hearted input from time to time improves the student's wellbeing and ability to focus on the key topic areas of:

This is a course that will run for a flexible period of time. We will design a course tailor-made for your needs and expectations.

## 21 HOURS A WEEK EXAM\* IN LONDON OR CANTERBURY

\*depending on availability





## RESIDENCE ACCOMMODATION

We are delighted to announce our new all-year-round established central Canterbury location with the launch of our exciting partnership with a fully inclusive residence situated on the campus of the University of Kent.



We provide a safe, secure, and well-presented full bed and board alternative on a purpose-built site that has been established for many years.



There is 24-hour surveillance, private woodlands, basketball and football areas, indoor common rooms with TVs, consoles, board games, and much more.





# ACTIVITIES AND FREE TIME



At LanguageUK we run a weekly social programme which usually comprises of some evening events and a Saturday day trip.



**Quiz  
Night**



**BBQ  
@ Garden**



**Table Tennis  
Tournament**



**Countryside  
Walks**



**City  
Tour**



**Dance  
Classes**



**Escape  
Rooms**



**International  
Lunches**



**Eat Out**



**Punting**



**Disco**



**Picnic**

## **SPECIAL OFFER**

### **4-WEEK 21 HOURS IELTS COURSE**

	<b>Price</b>	<b>Residence</b>
<b>Course Fee</b>	<b>£600</b>	
<b>Day Excursion (4 days)</b>	<b>£400</b>	<b>£1,260</b>
<b>1- Total without Accommodation</b>	<b>£1,000</b>	
	<b>2- Total with Residence</b>	<b>£2,260</b>

Call us. For more details...





# LANGUAGE UK

[www.languageuk.com](http://www.languageuk.com)

Accredited by the  
 **BRITISH COUNCIL**  
for the teaching  
of English in the UK



+447391830101



[info@languageuk.com](mailto:info@languageuk.com)

9 St Georges Place Canterbury, Kent CT1 1UT United Kingdom



[languageuk.co.uk](https://www.facebook.com/languageuk.co.uk)



[languageukcanterbury](https://www.instagram.com/languageukcanterbury)



[languageuk](https://twitter.com/languageuk)



[languageukcanterbury](https://www.youtube.com/languageukcanterbury)



[languageuk](https://www.linkedin.com/company/languageuk)