



LANGUAGE UK

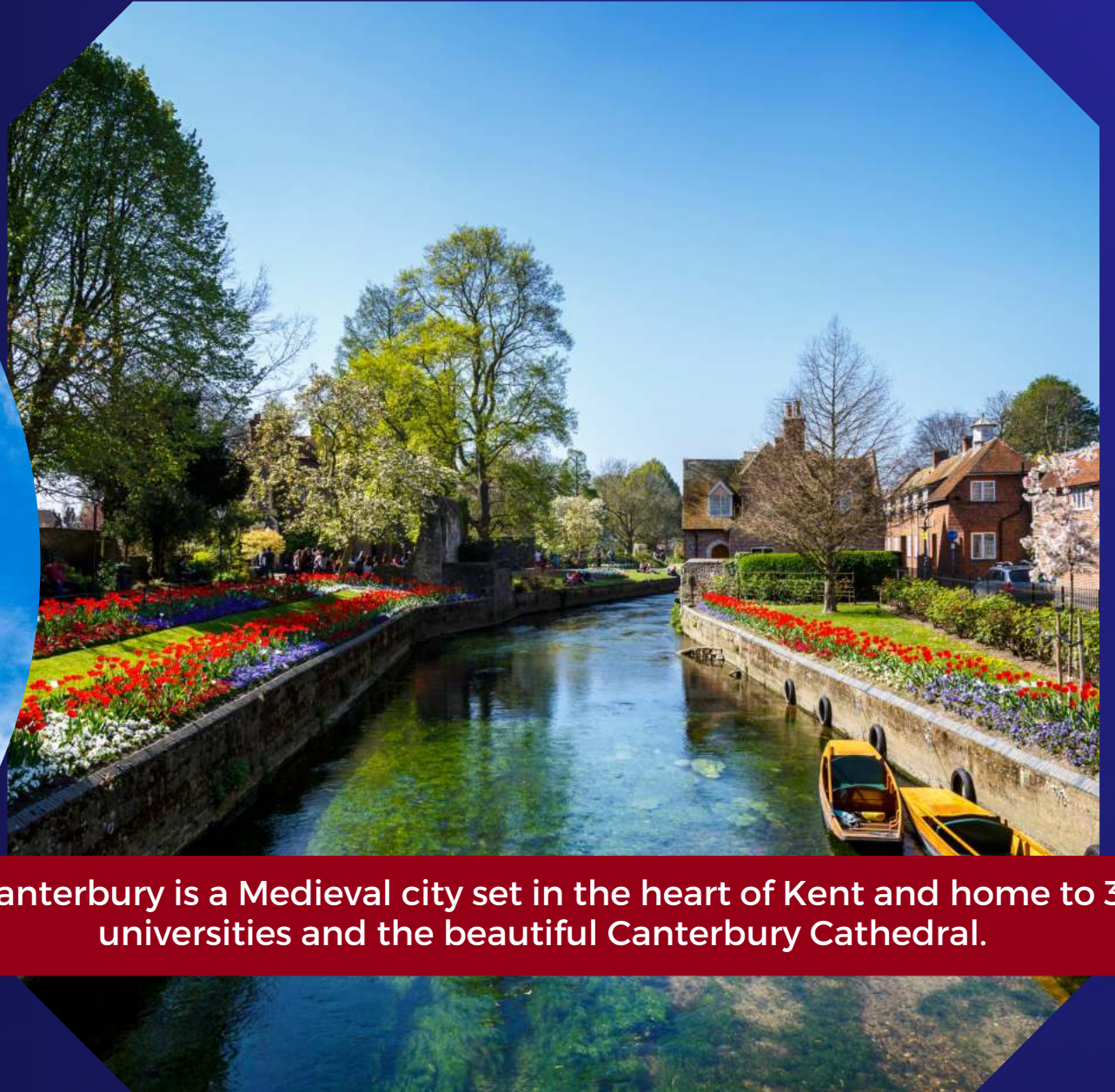


JUNIOR ENGLISH COURSES

Accredited by the
BRITISH COUNCIL
for the teaching
of English in the UK



**WELCOME
TO
CANTERBURY**



Canterbury is a Medieval city set in the heart of Kent and home to 3 universities and the beautiful Canterbury Cathedral.

LOCATION

There is nowhere quite like Canterbury. Our medieval walled city has been hosting visitors for over 1,000 years, so a warm welcome for any 'pilgrim' is guaranteed.

This summer, embrace the floral displays and warm weather as you wind your way through our cobbled streets. Drink in the historic sights and shop at a huge mix of independent and high-street shops and cosy cafes.



What can we offer you?

1. Ancient Architecture: Canterbury boasts historical buildings that date back centuries. Notably, the Westgate Towers, England's largest medieval gateway, which stands as a testament to its rich past. The Eastbridge Hospital, with remarkable architecture from 1190 and the partially preserved St Augustine's Abbey (dating back to 613 AD) offer glimpses into the city's history.

2. Stunning Cathedral: Canterbury Cathedral is a must-see. With parts dating from the 11th century, it's an awe-inspiring structure with Norman, Romanesque and Gothic architecture. As the city's top visitor attraction, it's well worth exploring.

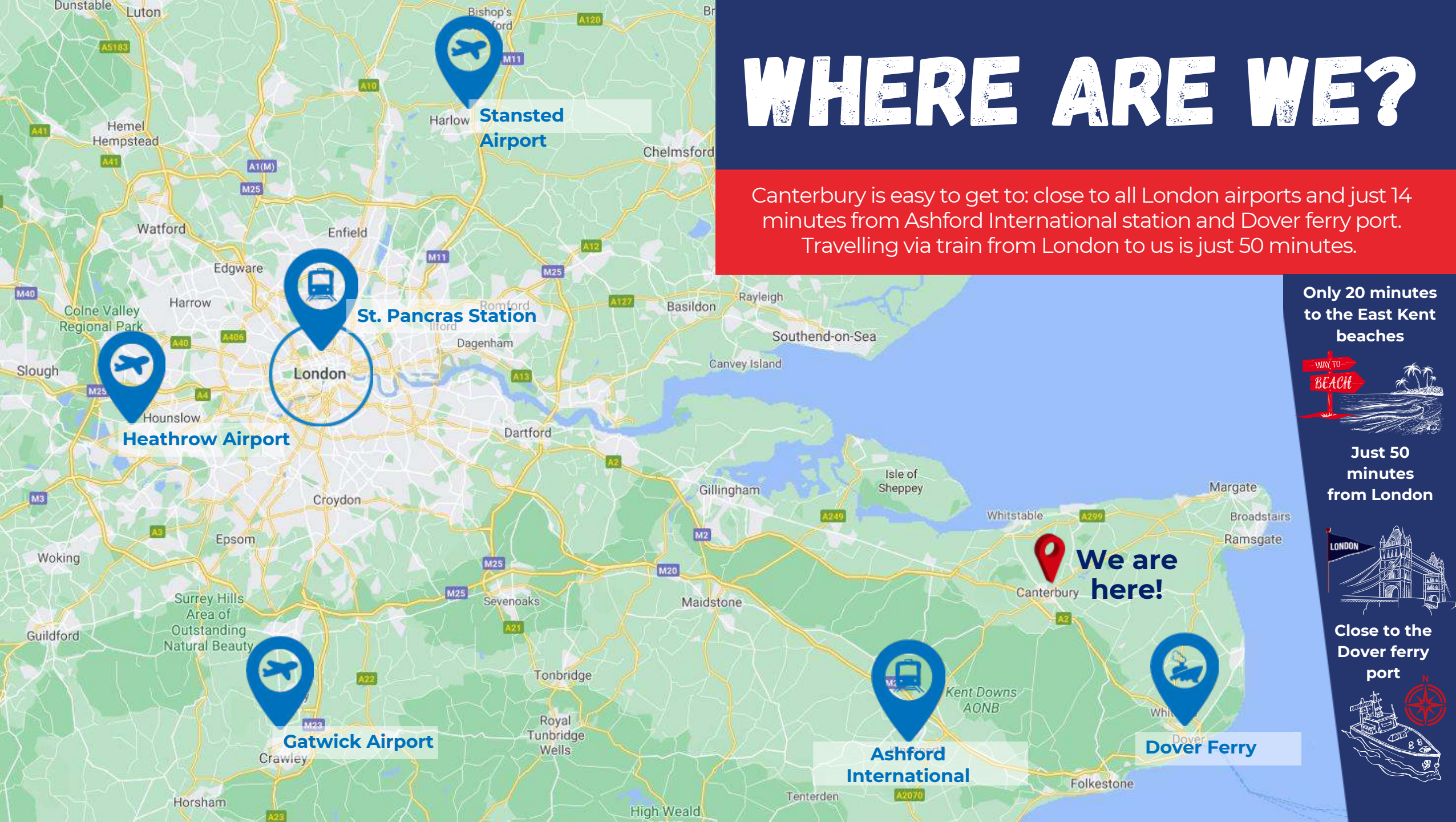
3. Shopping Experience: While Canterbury exudes historical charm, it also offers modern shopping. Whitefriars, an open-air shopping centre, features popular brands, while the King's Mile area hosts numerous independent businesses, including jewellers, cafes and artisan shops.

4. Arts and Culture: The city celebrates the arts. The Marlowe Theatre, named after playwright Christopher Marlowe, hosts exciting shows, plays, and concerts.

5. Easy Access: Less than an hour from London by high-speed rail, Canterbury is an ideal year-round destination. Explore cobbled streets, historic buildings, award-winning vineyards and ancient woodland as part of our special learning experience.

WHERE ARE WE?

Canterbury is easy to get to: close to all London airports and just 14 minutes from Ashford International station and Dover ferry port. Travelling via train from London to us is just 50 minutes.



Only 20 minutes to the East Kent beaches



Just 50 minutes from London



Close to the Dover ferry port

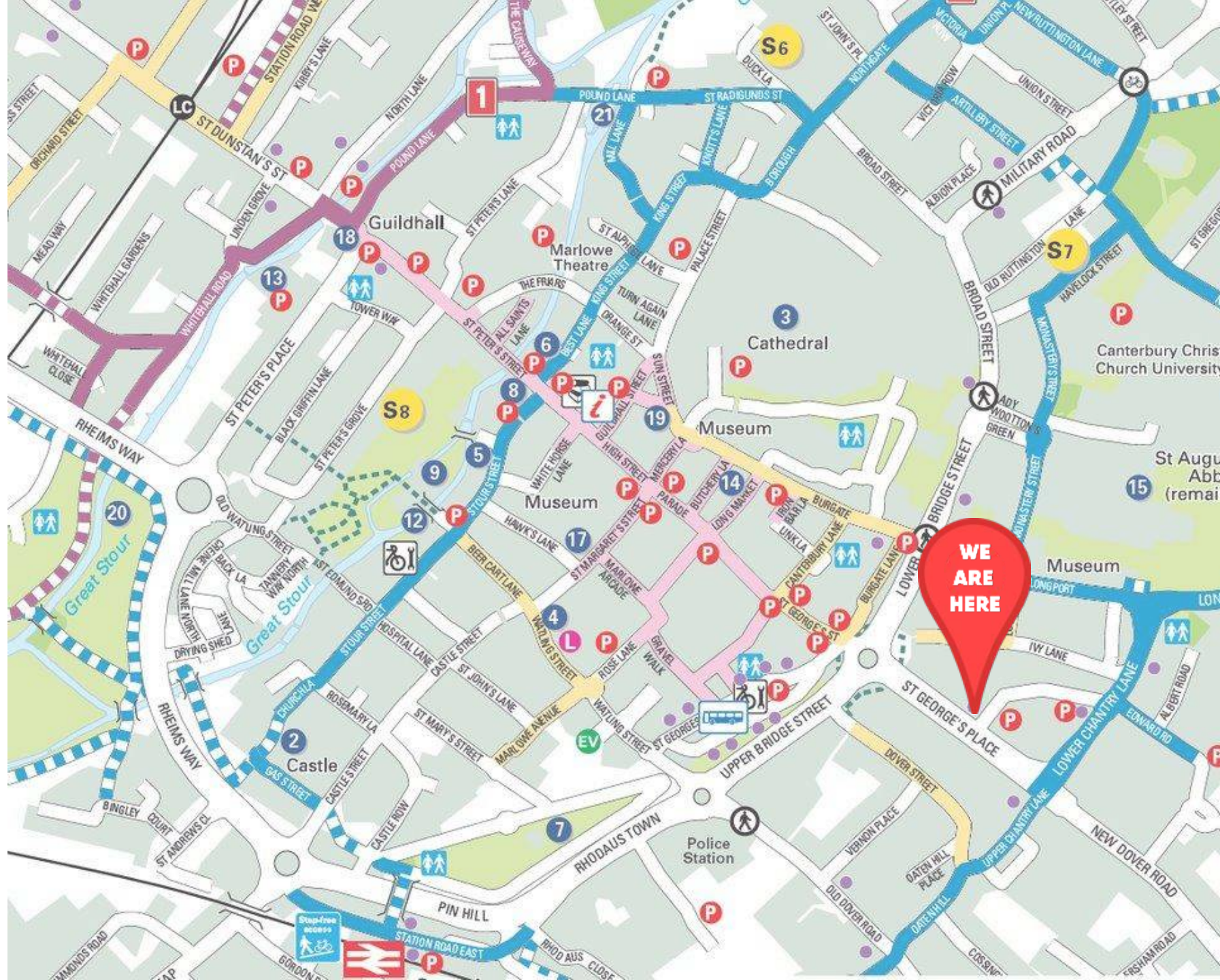


**THE SCHOOL
IS JUST A
3-MINUTE WALK
FROM THE CITY CENTRE**

Canterbury is easy to get to.

It's close to all London airports and just 30 minutes from Ashford International train station and Dover ferry port.

Canterbury has two train stations and can be reached from London Victoria or St. Pancras International train stations.



JUNIOR ENGLISH COURSE WITH SEVERAL ACCOMMODATION OPTIONS

1. Homestay option - (Year Round)
2. Residence option - (Year Round)
3. Summer Camp with Residence - (30th June - 4th August 2025)





JUNIOR ENGLISH PROGRAMME

12-17 YEARS

COURSE PROFILE



The course will provide visiting school students with the opportunity to experience a week in the UK and practise their English in class in the morning. During the afternoons the students will be given the opportunity to visit and explore the local area in their group.

The students will take their lessons at our school in the city centre of Canterbury. They will be given a timetable which will include themed lessons and activities relating to aspects of British culture, history and information related to the trips and activities.

Lessons

All lessons will focus on communication, encouraging the students to improve their fluency skills, particularly speaking and listening skills. The students will study elements of British culture through class workshops and project work relating to some of the activities and events outside class time.

COURSE INCLUDES

- All course materials
- Accommodation-shared bathroom
- Breakfast, lunch and evening meals
- 15 hours of class time
- Afternoon activities and trips
- Day Excursions
- Evening activities
- 1 free group leader for every 15 students

(SUBJECT TO AVAILABILITY)

*Please find the sample timetables in the next pages.

Age

12-17

Number of students
per class

15



WHO IS THE COURSE FOR?

The course is designed for school groups and aims to provide students with an educational and cultural experience.

The students will experience daily class-based workshops that will incorporate history and stories from the UK and that are related to the local area and Canterbury.

The students will explore the themes and discover for themselves through group and project work.

Bespoke courses can be arranged upon application. Such as STEM, preparation for work and study, IELTS, CAE, FCE, etc.

HOMESTAY & RESIDENCE

| | Monday | Tuesday | Wednesday | Thursday | Friday |
|----------------|--------------------------------------|--|--------------------|---|--------------------------------|
| 9:00 10:30 | General English | General English | General English | General English | General English |
| 10:30 11:00 | Break | | | | |
| 11:00 12:30 | General English | General English | General English | General English | General English |
| 12:30 13:30 | Lunch | | | Whitstable Tour with Bowling (Packed Lunch Included) | Lunch |
| 13:30 16:00 | Canterbury Tour with Cathedral Visit | River Stour Nature Walk through Westgate Gardens | Monopoly Challenge | | Sports day at Westgate Gardens |
| 16:00 18:00 | | | Free Time | | Free Time |
| 18:00 19:00 | Dinner | | Dinner | | Dinner |
| 19:00 20:30 | Team Building and Trivia | Evening with host families | Games Night | Evening with host families | Disco Night |



Saturday





LONDON DAY TRIP
 Lunch: Packed by host family
 Dinner: with host family

Sunday

- ARRIVALS
- DEPARTURES



**SUMMER CAMP
W RESIDENCE**

| Hour | Monday | Tuesday | Wed | Thursday | Friday | Saturday | Sunday | |
|---------------|---|--------------------------------------|---|--------------------------------------|--|--|-----------------|--------------------------------------|
| 9:00 - 10:30 | Arrival & Departure  | General English | Full-Day Excursion to Week 1 & 5 Oxford or Dover | General English | General English |  Full Day Excursion to London Sea-life Visit Included Packed Lunch Provided  | General English | |
| 10:30 - 11:00 | | Break | | Week 2 & 4 Rochester or Cambridge | Break | | Break | |
| 11:00 - 12:30 | | General English | Lunch | | General English | | | General English |
| 12:30 - 13:30 | | Canterbury Tour and Cathedral | | Lunch | Week 3 Brighton or London  | | Lunch | |
| 13:30 - 16:00 | | | General English | | | | Break | Canterbury Monopoly Challenge |
| 16:00 - 18:00 | | Dinner | General English | Free time and Shopping | | | | |
| 18:00 - 19:00 | | | Free Time | | On-site Activity | | | |
| 19:00 - 20:30 | | On-site Activity | | | | | | |

HOMESTAY ACCOMMODATION

All our homestay accommodation has been personally vetted by our Accommodation Officer. All Canterbury homestay accommodation is within walking distance of the school (from 5 to 25 minutes) or a short bus ride away. We have increased our homestay capacity by offering excellent accommodation in a nearby town called Faversham, a 10-minute train ride away. This has proved to be extremely popular with our junior groups. Travel tickets are included for Faversham homestay students.

- A shared bedrooms
- Breakfast and evening meals daily
- Free Wi-Fi access

*All our hosts meet the safe-guarding requirements and have been inspected by our accommodation officer

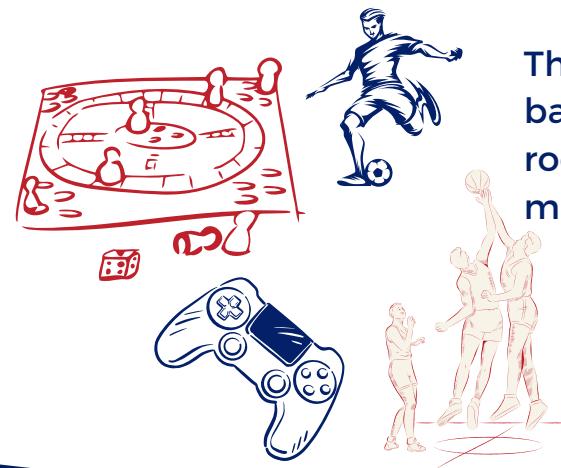


STUDENT RESIDENCE

We are delighted to announce our new all-year-round alternative to our established central Canterbury location with the launch of our exciting partnership with a fully inclusive residence situated on the campus of the University of Kent.



In addition to our homestay experience enjoyed by so many, we can now provide a safe, secure, and well-presented full bed and board alternative on a purpose-built site established for many years.



There is 24-hour surveillance, private woodlands, basketball and football areas, indoor common rooms with TVs, consoles, board games, and much more.

LANGUAGE UK



www.languageuk.com

E-mail:
info@languageuk.com

Address

9 St. George's Place
Canterbury Kent CT1 1UT
United Kingdom



Accredited by the
BRITISH COUNCIL
for the teaching
of English in the UK

